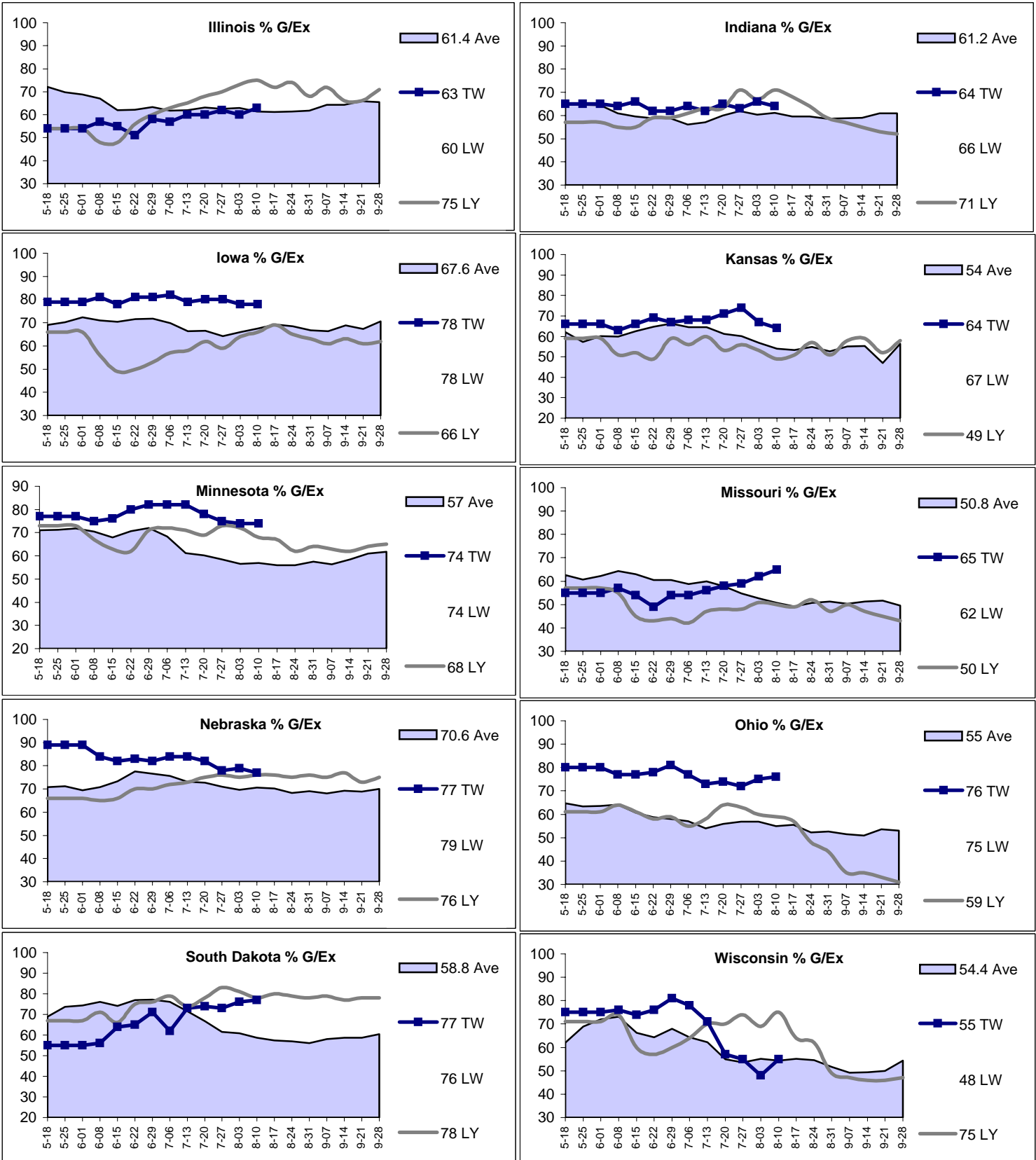


August 10, 2009

U.S. % Good/Excellent: 68% This Wk 68% Last Wk 67% Last Yr 60.8% Average



FCStone Group, Inc. assumes no liability for the use of this information contained and expresses no solicitation to buy or sell futures or options on futures contracts, OTC products. Commodity trading is risky and past financial results are not necessarily indicative of futures performance. Any hypothetical examples given are exactly that and no representation is being made that any person will or is likely to achieve profits or losses based on those examples. Reference to and discussion of OTC products are made solely on behalf of FCStone Trading LLC. Reproduction without authorization is forbidden. All rights reserved.

August 10, 2009

UNITED STATES

| | TY | LY | Ave |
|------|----|----|------|
| M-18 | 70 | 63 | 68.2 |
| M-25 | 70 | 63 | 68.2 |
| J-01 | 70 | 63 | 68.8 |
| J-08 | 69 | 60 | 68.8 |
| J-15 | 70 | 57 | 66.6 |
| J-22 | 70 | 59 | 67.8 |
| J-29 | 72 | 61 | 67.4 |
| J-06 | 71 | 62 | 65.4 |
| J-13 | 71 | 64 | 64.2 |
| J-20 | 71 | 65 | 63.2 |
| J-27 | 70 | 66 | 61.8 |
| A-03 | 68 | 66 | 61.4 |
| A-10 | 68 | 67 | 60.8 |
| A-17 | 67 | 67 | 60.8 |
| A-24 | 64 | 64 | 60.4 |
| A-31 | 61 | 61 | 59.8 |
| S-07 | 61 | 61 | 60.2 |
| S-14 | 61 | 61 | 61.4 |
| S-21 | 59 | 61 | 61.2 |
| S-28 | 61 | 62 | 62.6 |

| MN | TY | LY | Ave |
|------|----|----|------|
| M-18 | 77 | 73 | 71.0 |
| M-25 | 77 | 73 | 71.2 |
| J-01 | 77 | 73 | 71.8 |
| J-08 | 75 | 67 | 70.4 |
| J-15 | 76 | 63 | 68.0 |
| J-22 | 80 | 62 | 70.6 |
| J-29 | 82 | 71 | 72.0 |
| J-06 | 82 | 72 | 68.4 |
| J-13 | 82 | 71 | 61.2 |
| J-20 | 78 | 69 | 60.2 |
| J-27 | 75 | 73 | 58.4 |
| A-03 | 74 | 72 | 56.6 |
| A-10 | 74 | 68 | 57.0 |
| A-17 | 67 | 67 | 56.0 |
| A-24 | 62 | 62 | 56.0 |
| A-31 | 64 | 64 | 57.6 |
| S-07 | 63 | 63 | 56.4 |
| S-14 | 62 | 62 | 58.4 |
| S-21 | 64 | 61 | 61.0 |
| S-28 | 65 | 65 | 61.8 |

| WI | TY | LY | Ave |
|------|----|----|------|
| M-18 | 75 | 71 | 62.0 |
| M-25 | 75 | 71 | 69.0 |
| J-01 | 75 | 71 | 72.0 |
| J-08 | 76 | 74 | 73.2 |
| J-15 | 74 | 60 | 66.2 |
| J-22 | 76 | 57 | 64.4 |
| J-29 | 81 | 60 | 68.0 |
| J-06 | 78 | 64 | 64.4 |
| J-13 | 71 | 70 | 62.2 |
| J-20 | 57 | 70 | 55.0 |
| J-27 | 55 | 74 | 53.6 |
| A-03 | 48 | 69 | 55.2 |
| A-10 | 55 | 75 | 54.4 |
| A-17 | 64 | 54 | 55.2 |
| A-24 | 62 | 62 | 54.6 |
| A-31 | 49 | 51 | 51.6 |
| S-07 | 47 | 49 | 49.2 |
| S-14 | 46 | 46 | 49.4 |
| S-21 | 46 | 50 | 50.0 |
| S-28 | 47 | 54 | 54.4 |

| SD | TY | LY | Ave |
|------|----|----|------|
| M-18 | 55 | 67 | 69.0 |
| M-25 | 55 | 67 | 73.6 |
| J-01 | 55 | 67 | 74.4 |
| J-08 | 56 | 71 | 76.0 |
| J-15 | 64 | 66 | 74.2 |
| J-22 | 65 | 75 | 77.0 |
| J-29 | 71 | 76 | 77.2 |
| J-06 | 62 | 79 | 76.0 |
| J-13 | 73 | 74 | 71.6 |
| J-20 | 74 | 78 | 66.8 |
| J-27 | 73 | 83 | 61.6 |
| A-03 | 76 | 81 | 60.8 |
| A-10 | 77 | 78 | 58.8 |
| A-17 | 80 | 80 | 57.4 |
| A-24 | 79 | 79 | 57.0 |
| A-31 | 78 | 78 | 56.0 |
| S-07 | 79 | 79 | 58.0 |
| S-14 | 77 | 77 | 58.6 |
| S-21 | 78 | 78 | 58.6 |
| S-28 | 78 | 78 | 60.4 |

| NE | TY | LY | Ave |
|------|----|----|------|
| M-18 | 89 | 66 | 70.8 |
| M-25 | 89 | 66 | 71.2 |
| J-01 | 89 | 66 | 69.4 |
| J-08 | 84 | 65 | 70.8 |
| J-15 | 82 | 66 | 73.4 |
| J-22 | 83 | 70 | 77.6 |
| J-29 | 82 | 70 | 76.6 |
| J-06 | 84 | 72 | 75.6 |
| J-13 | 84 | 73 | 73.2 |
| J-20 | 82 | 75 | 72.8 |
| J-27 | 78 | 76 | 71.0 |
| A-03 | 79 | 75 | 69.6 |
| A-10 | 77 | 76 | 70.6 |
| A-17 | 76 | 70 | 70.2 |
| A-24 | 75 | 68 | 68.2 |
| A-31 | 76 | 69 | 69.0 |
| S-07 | 75 | 68 | 68.0 |
| S-14 | 77 | 69 | 69.2 |
| S-21 | 73 | 68 | 68.8 |
| S-28 | 75 | 70 | 70.0 |

| IA | TY | LY | Ave |
|------|----|----|------|
| M-18 | 79 | 66 | 69.0 |
| M-25 | 79 | 66 | 70.2 |
| J-01 | 79 | 66 | 72.4 |
| J-08 | 81 | 56 | 71.0 |
| J-15 | 78 | 49 | 70.4 |
| J-22 | 81 | 50 | 71.6 |
| J-29 | 81 | 53 | 71.8 |
| J-06 | 82 | 57 | 69.8 |
| J-13 | 79 | 58 | 66.4 |
| J-20 | 80 | 62 | 66.6 |
| J-27 | 80 | 59 | 64.2 |
| A-03 | 78 | 64 | 66.0 |
| A-10 | 78 | 66 | 67.6 |
| A-17 | 69 | 69 | 69.2 |
| A-24 | 65 | 68 | 68.4 |
| A-31 | 63 | 66 | 66.8 |
| S-07 | 61 | 66 | 66.4 |
| S-14 | 63 | 68 | 68.8 |
| S-21 | 61 | 67 | 67.4 |
| S-28 | 62 | 70 | 70.6 |

| IL | TY | LY | Ave |
|------|----|----|------|
| M-18 | 54 | 54 | 72.2 |
| M-25 | 54 | 54 | 69.8 |
| J-01 | 54 | 54 | 68.8 |
| J-08 | 57 | 48 | 67.0 |
| J-15 | 55 | 48 | 62.0 |
| J-22 | 51 | 56 | 62.2 |
| J-29 | 58 | 60 | 63.4 |
| J-06 | 57 | 63 | 61.8 |
| J-13 | 60 | 65 | 62.0 |
| J-20 | 60 | 68 | 63.2 |
| J-27 | 62 | 70 | 62.6 |
| A-03 | 60 | 73 | 63.0 |
| A-10 | 63 | 75 | 61.4 |
| A-17 | 72 | 61 | 61.2 |
| A-24 | 74 | 61 | 61.4 |
| A-31 | 68 | 61 | 61.8 |
| S-07 | 72 | 64 | 64.4 |
| S-14 | 66 | 64 | 64.4 |
| S-21 | 66 | 65 | 65.8 |
| S-28 | 71 | 65 | 65.4 |

| IN | TY | LY | Ave |
|------|----|----|------|
| M-18 | 65 | 57 | 64.6 |
| M-25 | 65 | 57 | 64.6 |
| J-01 | 65 | 57 | 64.4 |
| J-08 | 64 | 55 | 61.0 |
| J-15 | 66 | 55 | 59.6 |
| J-22 | 62 | 59 | 58.8 |
| J-29 | 62 | 59 | 58.8 |
| J-06 | 64 | 61 | 56.2 |
| J-13 | 62 | 63 | 57.0 |
| J-20 | 65 | 63 | 60.0 |
| J-27 | 63 | 71 | 62.0 |
| A-03 | 66 | 67 | 60.4 |
| A-10 | 64 | 71 | 61.2 |
| A-17 | 68 | 59 | 59.6 |
| A-24 | 64 | 64 | 58.6 |
| A-31 | 59 | 59 | 58.6 |
| S-07 | 57 | 57 | 58.8 |
| S-14 | 55 | 59 | 59.0 |
| S-21 | 53 | 61 | 61.0 |
| S-28 | 52 | 61 | 61.0 |

| OH | TY | LY | Ave |
|------|----|----|------|
| M-18 | 80 | 61 | 64.8 |
| M-25 | 80 | 61 | 63.4 |
| J-01 | 80 | 61 | 63.6 |
| J-08 | 77 | 64 | 64.2 |
| J-15 | 77 | 61 | 60.6 |
| J-22 | 78 | 58 | 58.8 |
| J-29 | 81 | 59 | 58.0 |
| J-06 | 77 | 55 | 57.0 |
| J-13 | 73 | 58 | 54.0 |
| J-20 | 74 | 64 | 55.8 |
| J-27 | 72 | 63 | 56.6 |
| A-03 | 75 | 60 | 56.8 |
| A-10 | 76 | 59 | 55.0 |
| A-17 | 57 | 57 | 55.6 |
| A-24 | 48 | 52 | 52.2 |
| A-31 | 44 | 52 | 52.6 |
| S-07 | 35 | 51 | 51.4 |
| S-14 | 35 | 51 | 51.0 |
| S-21 | 33 | 53 | 53.6 |
| S-28 | 31 | 53 | 53.0 |

| KS | TY | LY | Ave |
|------|----|----|------|
| M-18 | 66 | 59 | 62.0 |
| M-25 | 66 | 59 | 57.2 |
| J-01 | 66 | 59 | 60.2 |
| J-08 | 63 | 51 | 59.8 |
| J-15 | 66 | 52 | 62.6 |
| J-22 | 69 | 49 | 64.8 |
| J-29 | 67 | 59 | 66.2 |
| J-06 | 68 | 56 | 64.4 |
| J-13 | 68 | 60 | 64.6 |
| J-20 | 71 | 53 | 61.2 |
| J-27 | 74 | 56 | 60.2 |
| A-03 | 67 | 53 | 56.8 |
| A-10 | 64 | 49 | 54.0 |
| A-17 | 51 | 53 | 53.4 |
| A-24 | 57 | 54 | 54.8 |
| A-31 | 51 | 52 | 52.6 |
| S-07 | 58 | 55 | 55.0 |
| S-14 | 59 | 55 | 55.2 |
| S-21 | 52 | 47 | 47.0 |
| S-28 | 58 | 56 | 56.4 |

| MO | TY | LY | Ave |
|------|----|----|------|
| M-18 | 55 | 57 | 62.6 |
| M-25 | 55 | 57 | 60.6 |
| J-01 | 55 | 57 | 62.2 |
| J-08 | 57 | 55 | 64.4 |
| J-15 | 54 | 45 | 63.0 |
| J-22 | 49 | 43 | 60.4 |
| J-29 | 54 | 44 | 60.4 |
| J-06 | 54 | 42 | 58.8 |
| J-13 | 56 | 47 | 60.0 |
| J-20 | 58 | 48 | 57.8 |
| J-27 | 59 | 48 | 54.8 |
| A-03 | 62 | 51 | 52.6 |
| A-10 | 65 | 50 | 50.8 |
| A-17 | 49 | 49 | 49.2 |
| A-24 | 52 | 50 | 50.8 |
| A-31 | 47 | 51 | 51.2 |
| S-07 | 50 | 50 | 50.4 |
| S-14 | 47 | 51 | 51.2 |
| S-21 | 45 | 51 | 51.6 |
| S-28 | 43 | 49 | 49.6 |